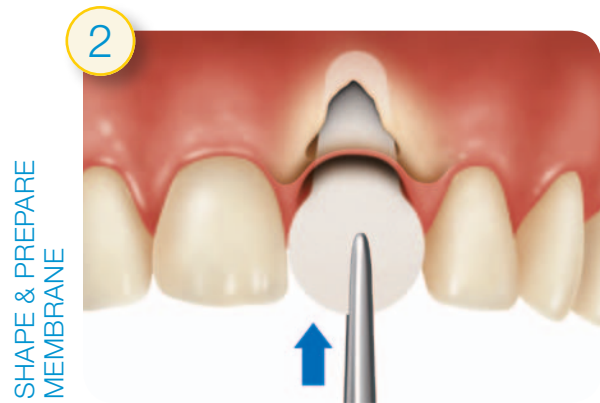


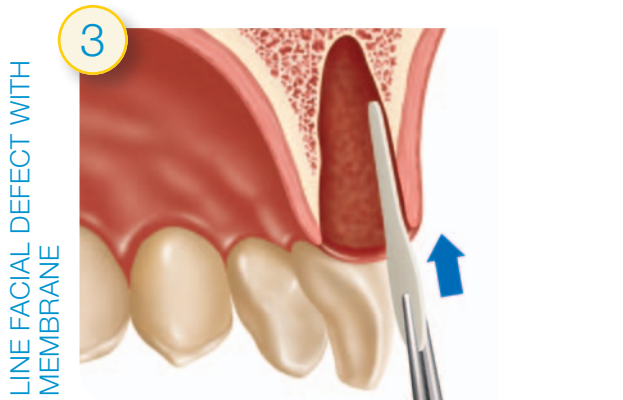
1
ATRAUMATICALLY EXTRACT
TOOTH USING A FLAPLESS
TECHNIQUE

Atraumatically Extract Tooth Using a Flapless Technique: Prepare the bone graft material (e.g. *Puros*® Particulate) according to the instructions for use. Utilizing an atraumatic, flapless technique, carefully extract the tooth and completely debride the socket.



2
SHAPE & PREPARE
MEMBRANE

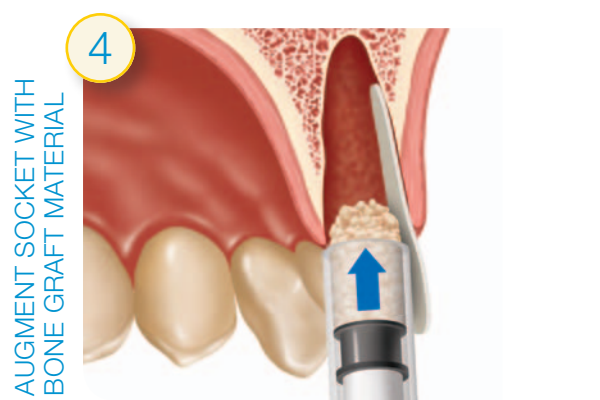
Shape & Prepare Membrane: Remove the *Zimmer* Socket Repair Membrane from the packaging. Insert the small end of the pre-cut membrane into the socket, ensuring that it extends over the facial defect both laterally and apically. Establish how much of the membrane's large end will be needed to fold closely over the top of the socket to facilitate closure after grafting. Remove the membrane and trim as needed.



3
LINE FACIAL DEFECT WITH
MEMBRANE

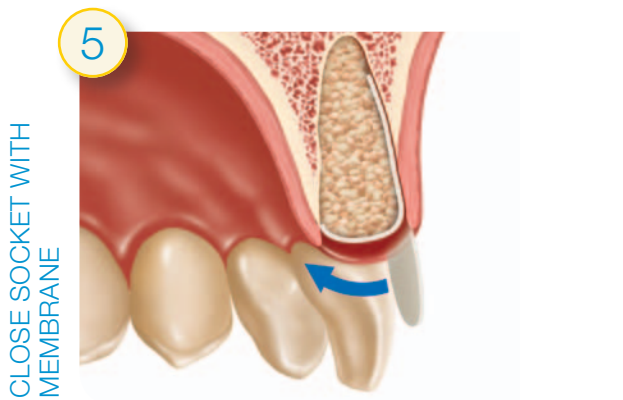
Line Facial Defect with Membrane: Insert the small end of the membrane *into* the socket and against the facial tissue.

Caution: To help maintain blood supply to the remaining facial plate, do not lift the periosteum off the bone.



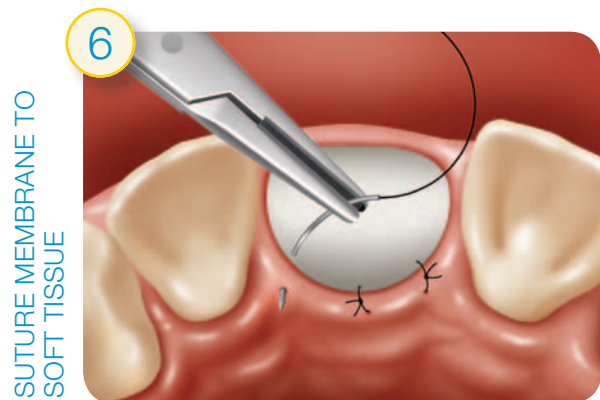
4
AUGMENT SOCKET WITH
BONE GRAFT MATERIAL

Augment Socket with Bone Graft Material: Augment the socket with graft material using a sterile syringe or sterile applicator. To fill the syringe, pull back on the plunger and gently press its tip into the hydrated graft material. Repeat until the plunger is filled. After placing bone graft material into socket, firmly compress with a sterile instrument. This will prevent voids at the apex of the socket and push the facial tissue labially for better ridge shape.



5
CLOSE SOCKET WITH
MEMBRANE

Close Socket with Membrane: Gently close the socket by folding the membrane over the bone graft material until the membrane approximates with the palatal/lingual tissue. The membrane should be stable due to the graft material pressing it against the facial plate.



6
SUTURE MEMBRANE TO
SOFT TISSUE

Suture Membrane to Soft Tissue: Place at least 2 to 3 interrupted 5-0 absorbable sutures to secure the membrane to the palatal/lingual tissue.

Note: Typically, no sutures on the labial/buccal aspect are needed since the membrane will be held by pressure of the graft material.

Zimmer Socket Repair Membrane and Technique for Facial Plate Defects

The Zimmer Socket Repair Membrane is designed to assist wound healing in alveolar facial plate repair and residual ridge preservation following atraumatic, flapless single-root tooth extraction.

- Socket grafting can help to preserve bone volume for implant placement and improve aesthetic results¹
- The socket repair procedure is a flapless technique designed to preserve natural soft tissue architecture and vascularity²
- Guided bone regeneration is performed inside the socket by lining the defect with the bioabsorbable collagen membrane prior to filling with bone graft material? The membrane is designed to stabilize the graft material and block fibrous tissue ingrowth²
- An external extension of the membrane is folded over the top of the socket and sutured to the palatal/lingual soft tissue to help contain the graft material² and aid in stabilizing the clot for healing³
- As with any socket grafting procedure, minor loss of coronal graft particles may normally occur until soft tissue healing provides complete coverage²
- Membrane is usually completely resorbed 26-38 weeks following surgery.*

Suggested surgical components for this procedure:

- 1 Zimmer Socket Repair Membrane
- 2 Bone graft material from Zimmer Dental (e.g. *Puros* Particulate)
- 3 1cc open-bore syringe or sterile applicator to deliver the bone graft material
- 4 Tissue forceps
- 5 Scissors to trim membrane
- 6 5-0 absorbable suture

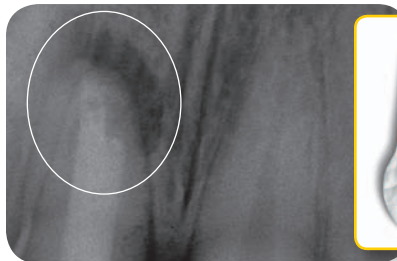
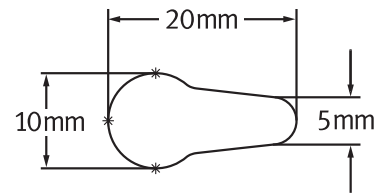


Fig. 1 Periapical pathology caused loss of buccal plate of bone.



Fig. 2 Membrane placed in socket.



Fig. 3 Puros Particulate delivered into socket.



Fig. 4 Membrane sutured in place.



Fig. 5 Tissue healing at two weeks.



Fig. 6 Final aesthetic result.

Ordering information

Catalog Number	Description
0154	Zimmer Socket Repair Membrane

Clinical photos ©2010 Dennis Tarnow, DDS, and Richard Smith, DDS. All rights reserved. Individual results may vary.

Manufactured by Collagen Matrix, Inc., 509 Commerce Street, Franklin Lakes, NJ 07417, USA

*When not exposed the resorption rate is 26-38 weeks; if left exposed, resorption time is shorter.

1. Sclar AG. Ridge preservation for optimum esthetics and function: the "Bio-Col" technique. *Postgraduate Dentistry*. 1999;6:3-11.
2. Elian N, Cho SC, Froum S, Smith RB, Tarnow DP. A simplified socket classification and repair technique. *Pract Proced Aesthet Dent*. 2007;19:99-104, quiz 106.
3. Bunyaratavej P, Wang HL. Collagen membranes: a review. *J Periodontol*. 2001;72:215-229.

©2010 Zimmer Dental Inc. All rights reserved 5874, Rev. 9/10, Zimmer Socket Repair Membrane is manufactured by Zimmer Dental Inc. by Collagen Matrix, Inc. Puros Allografts are manufactured by RTI Biologics, Inc. and marketed by Zimmer Dental Inc. Please note that not all regenerative materials are registered or available in every country/region, and part numbers for Puros Allografts vary. Please check with a Zimmer Dental representative for availability and additional information.

To receive our eNews visit us at http://www.zimmerdental.com/news_eNewsletterSignUp.aspx

For more information about our Products, Regenerative Materials and Educational Opportunities, contact us:

In the U.S. 1 (800) 854-7019
To fax an order 1 (888) 225-2483
Outside the U.S. +1 (760) 929-4300
Australia +61 (0)2 9950 5434 or 1 (800) 241 916
Canada +1 (905) 567-2073 or 1 (800) 265-0968

France +33 (0)1 45 12 35 35
Germany +49 (0)761 1 56 47 0
Israel +972 (0)3 6124242
Italy +39 043 855 5573
Spain +34 93 846 05 43



Zimmer Dental
1900 Aston Avenue
Carlsbad, CA 92008-7308
USA

www.zimmerdental.com